



Accessibility Guide

Open House

This document has been made to help potential future parents and caregivers and their families become familiar with our school in the context of our Open House.

Please enter by the main or accessible entrance. Open House activities will take place inside the Gymnasium and individual rooms on the third floor. A third floor Chill Out Room will be available.

A General Note about Accessibility at the Grove

The Grove Community School is located on the third floor of the 100 year old Alexander Muir Gladstone (AMG) school building. The school does not have an elevator and is unfortunately not accessible to folks using mobility devices as stairs are needed to access areas in regular use. New or potential parents or caregivers who use mobility devices are welcome to reach out if they wish to speak to current parents who use mobility devices to better understand the experience.

Some Notes about Neuroinclusivity at the Grove

The Grove has an Accessibility and Neuroinclusivity committee which is parent run with a teacher rep. Another teacher, Joey Mandel, is a half time resource teacher who has published several books on social emotional wellbeing.

TABLE OF CONTENTS

ENTRANCES	2
COVID-19 SAFETY	5
WHO TO CONTACT	5
INSIDE THE SCHOOL	6
INDIVIDUAL ROOMS ON THIRD FLOOR	11
WASHROOMS	15
LUNCH ROOM	15
THE GROUNDS	16
PARKING	18
CROSSING GUARDS	19
MAP OF SCHOOL	20

ENTRANCES

Main Entrance



The main entrance is located on Gladstone Avenue north of Waterloo Street.

Accessible Entrance



The accessible entrance is located off Gladstone Avenue, just north of the main entrance, at the doors for the YMCA Childcare Centre. Press the accessible ringer to gain entrance.

The Grove Entrance



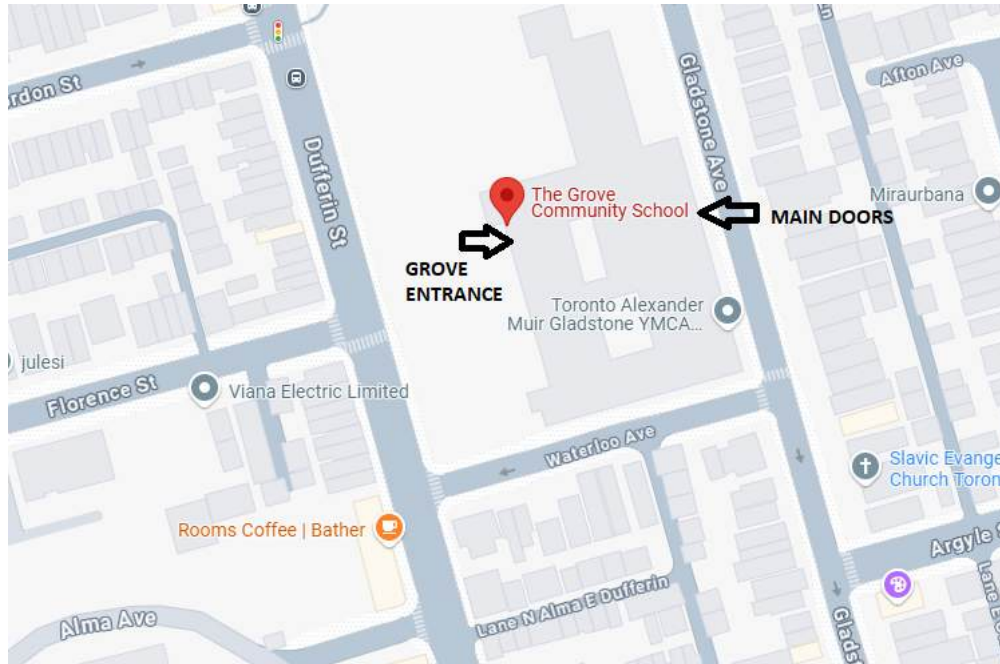
The Grove school entrance is Door 6 located off Dufferin Street. It can be accessed by entering the school gates at Florence Street, passing through the school grounds by the play structure. You will see 'The Grove Community School' above that entrance area.

School From Gladstone Avenue



This is the view of the main entrance from across the street on Gladstone Avenue.

Google Maps



This is a screenshot from Google Maps. When you search for The Grove in Google Maps, the red pinpoint shows the location of the school as The Grove Entrance. While this entrance is used by staff and students during the day, this is not the entrance used by the public. See Main Doors marked on map and pictured above.

COVID-19 SAFETY

TDSB schools, including The Grove, remain mask-friendly for all. Masks are not mandatory.

WHO TO CONTACT

The Grove Community School
(416) 393-9150

INSIDE THE SCHOOL

Inside Front Doors



These are photos inside the front doors. There is a washroom labeled Ladies on the left when you enter and a washroom labeled Men on the right when you enter. These washrooms are available during events.

Inside Gymnasium



This is a photo inside the gymnasium used by The Grove.

AMG Office



This is a photo outside the AMG Main Office.



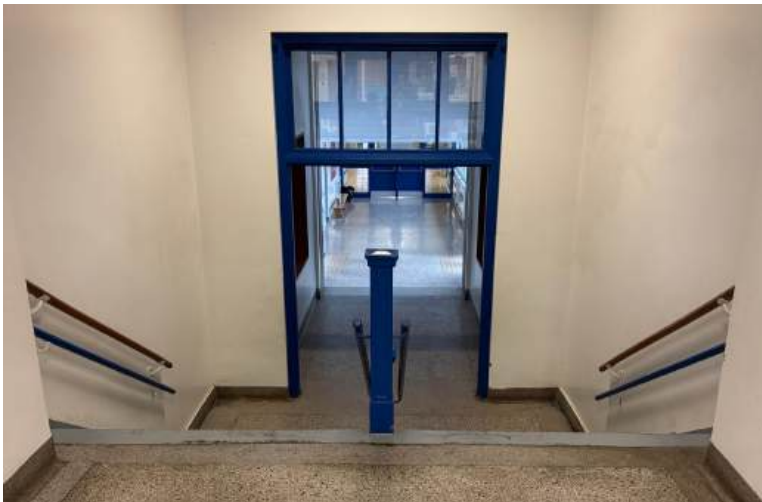
This is a photo inside the AMG Main Office.

Stairs Going up to The Grove

The Grove is located on the 3rd floor of the building.



This is a photo of the Breezeway, which you access by going through the doors to the left of the AMG Office. At the end of the Breezeway is a set of stairs. Proceed up the stairs.



This is a photo looking down the stairs at the end of the Breezeway, looking toward the Breezeway.



When you reach the top of the stairs at the Breezeway, turn left or right, and go to the end of either hallway. You will reach a set of stairs to take you to the third floor. This is a photo of the stairs at the end of the hall when you turn right. The blue door pictured is the Grove Entrance, which takes you outside (pictured earlier from outside)

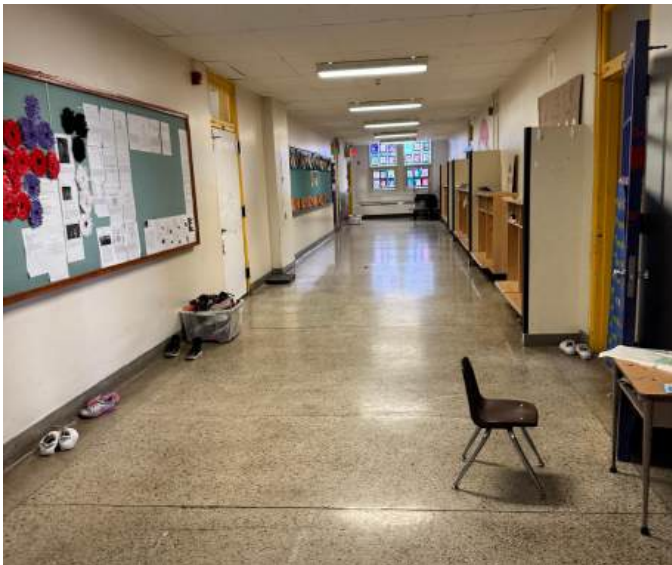


This is a photo looking down the staircase.



This is a photo of the stairs reaching the entrance of the third floor and The Grove.

3rd Floor Hallway



This is a photo facing down the hallway after entering the third floor.

INDIVIDUAL ROOMS ON THIRD FLOOR



These are photos of the Art classroom



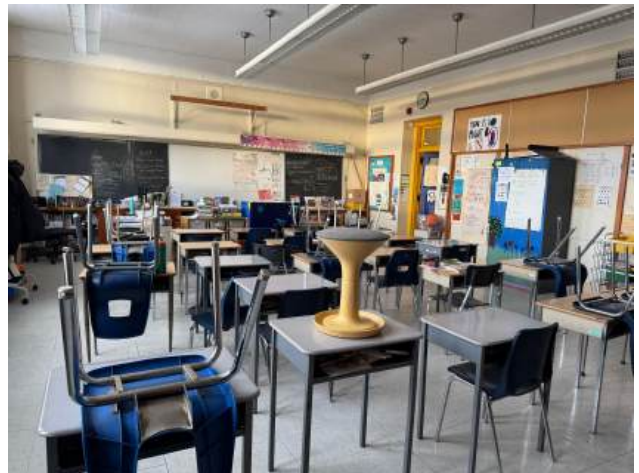
These are photos of the Kindergarten classroom.



These are photos of the Grade 4/5 classroom



These are photos of the Resource classroom



These are photos of the 5/6 classroom



This is a photo of the Grade 2/3 classroom

Chill-Out Room



These are photos of the Chill-Out Room. It will be available at the Open House. It was created as a resource to provide a safe and supportive space for students who may be experiencing sensory overload or moments of emotional dysregulation. The space offers a comfy environment, and includes a number of sensory tools that can be tailored to individual student needs. The room can be helpful in allowing students space for emotional

and sensory processing, prioritizing diverse and unique students needs, so that students can return to the classroom feeling calm and focused. This initiative aims to create a more inclusive, supportive, and effective educational experience for our neurodiverse students.

The Grove Office



This is a photo outside The Grove Office. This office is staffed in the mornings only.



This is a photo inside The Grove Office.

WASHROOMS



This is a photo of the third floor bathrooms. The one on the left is labeled boys and the one on the right is labeled all gender.

LUNCH ROOM



This is a photo of the Lunch Room located in the basement.

THE GROUNDS

Play Structure



This is a photo of the play structure available to all students at AMG and The Grove during recesses.

Field



This is a photo of the track and the field, which are used for sports and play.

Quiet Courtyard



This is a photo of the Quiet Courtyard which is used for Kindergarten recess and dismissal, as well outdoor lunch for students of The Grove enrolled in that program.

Lion Courtyard



This is a photo of the Lion Courtyard which is also used for Kindergarten recess.

PARKING

Parking is available on Gladstone Avenue, Waterloo Street, and Dufferin Street for time-limited periods indicated on signage.

Accessible Parking is located in the parking lot located just north of the school on Gladstone Avenue and on Waterloo Avenue. There is a spot opposite the school on Gladstone as well.



This is a photo of the accessible parking spot in the parking lot on Gladstone at the intersection of Gladstone and Cross Streets.

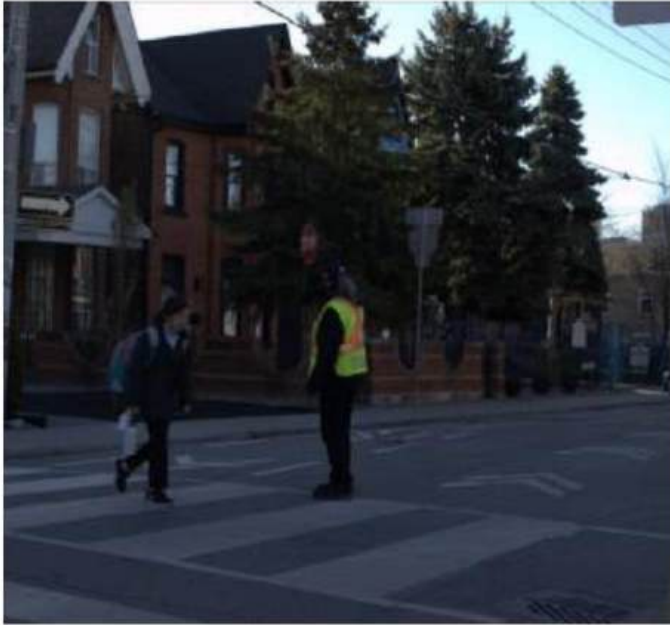


This is a photo of the accessible parking spot in the parking lot on Waterloo Ave close to Dufferin.

CROSSING GUARDS

There are three Crossing Guards serving the area of the school at the following locations:

Gordon Street



This is a photo of the crosswalk at Gordon Street

Florence Street



These are photos of the crosswalk at Florence Street

Waterloo Street



This is a photo of the crosswalk at Waterloo Street

MAP OF THE SCHOOL

